



Solid Choices for Delicate Pumping

JABSCO FLEXIBLE IMPELLER & ROTARY LOBE PUMPS



VAN DER ENDE GROEP

Jabsco Rotary Lobe & Flexible Impeller Pumps

Pumping delicate, viscous fluids and products that contain solids in suspension can be a daily challenge. There are many types of pumps on the market, but the effects on productivity and product quality can be costly if the wrong type of pump is chosen. Fortunately, Jabsco has a variety of positive displacement **Flexible Impeller Pumps** and **Rotary Lobe Pumps** that are solid choices for the hygienic, food, pharmaceutical, personal care and industrial chemical industries.

Jabsco **Flexible Impeller Pumps** have excellent priming properties due to an elastomer impeller with flexing vanes,

which have the ability to pump at low speeds allowing gentle pumping of delicate fluids, liquids with suspended hard or soft solids and air-entrained products.

Jabsco **Rotary Lobe Pumps** have high pressure capabilities, due to high precision engineered non-contacting rigid stainless steel lobes, rotating in a large chamber, which allow it to safely and delicately pump high and low viscosity liquids, including suspended soft solids.





Jabsco Rotary Lobe Pumps

Rotary Lobe Pumps

Jabsco has a 40-year track record of producing exceptionally reliable lobe pumps used in a variety of industries:

- Non-contacting synchronized lobes able to process large-size soft solids
- SS316L pump head capable of high pressures and smooth flow
- Hygienic approvals available for food and pharmaceutical use

Wide range of standard options

- Multiple rotor forms
- Choice of pressure relief and temperature control options
- Many seal configurations and materials to choose from
- Alternative Surface finishes selections
- All stainless steel construction available
- 3A, EHEDG and ATEX approvals
- 3.1 certification packs

Robust design

- Large diameter shafts withstand pressure
- High grade taper bearings for long life
- Precision engineered pump head
- Wide helical gear design for quiet running
- White Epoxy-coated bearing housing and gear cover as standard
- All-stainless steel option available

High volumetric efficiency

- Bi-lobe Scimitar and Tri-lobe form rotors available and interchangeable to suit both hydraulic performance and personal tastes
- Both rotor forms available in high efficiency or high pressure versions

Jabsco rotary lobe pump are well suited to the chemical & industrial, food & beverage, personal care & cosmetics and Pharmaceutical processing markets. With a comprehensive range of 5 main pump sizes, the 3A, FDA, EN1935-2004 approved HP series and Ultra - hygienic EHEDG approved UL series Jabsco can quickly and efficiently provide lobe pump for your process and the technical support needed to assure end customer satisfaction. For low flows, ask about our EHEDG 55 and 3A FDA S2 series.

Easy maintenance

- All pumps supplied with rotor retainer and seal removal tooling
- Front loading single shaft seals, simple in design, are fully accessible without disturbing the process pipework
- Scimitar rotors require no timing adjustment
- Comprehensive user manual with step-by-step maintenance instructions including spare parts guide, provided with new, pumps

Especially suited for:

- Ingredient unloading and transfer
- Tank filling and emptying
- Recirculation and mixing
- Portion and container filling
- Sampling and filtration

Applications include:

- Chemical and industrial
- Food and beverage
- Personal care products and cosmetics
- Pharmaceutical



Jabsco Flexible Impeller Pumps

Flexible Impeller Pumps

- Based on technology that Jabsco first patented over 80 years ago
- The output flow is smooth, steady and pulsation-free
- The gentle pumping action will not break down shear-sensitive or fragile liquids
- Cream fillings, jams, sauces and pie fillings that contain fruit pieces are handled with ease

Ease of maintenance

- Single moving part (the impeller) greatly simplifies maintenance
- Just four screws to remove the end cover for easy inspection and replacement of impeller if necessary
- Four more screws allows access to maintain mechanical seals

Rugged design

Jabsco pumps are regarded by many as the best of their type on the market with:

- 316 SS wetted parts, standard on Jabsco Flexible Impeller Pumps
- Long-life, durable flexible impellers
- Market-leading mechanical seals are external to pumped media
- High grade large bearings in pedestal pump variants
- Wide diameter precision ground shafts
- Design allows pump to pass hard particles, such as bones and seeds, without stalling

Installation benefits

- Compact pump size - more space efficient than alternative pumping technologies
- Reversible operation - makes the pump adaptable to differing situations
- High dry-priming ability of up to five meters - allowing for convenient and safe installation positions for bulk transfer and decanting

Especially suited for:

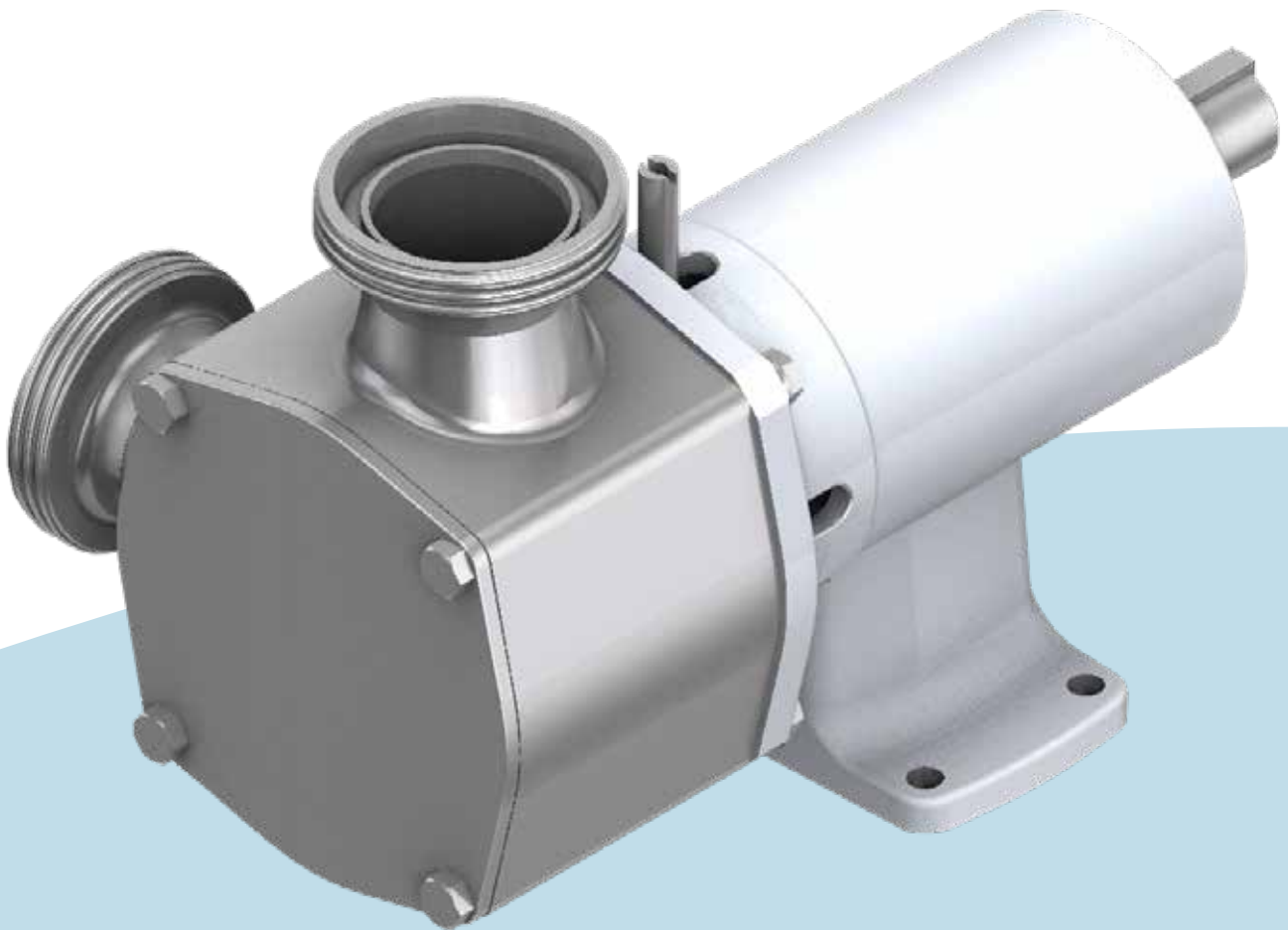
- Ingredient unloading and transfer
- Tank filling and emptying
- Recirculation and mixing
- Portion and container filling
- Sampling, filtration and more
- Brine injection

Applications include:

- Food and beverage
- Personal care products and cosmetics
- Industrial fluid products

Features & Options

- Dry self-priming
- Chemically compatible 316 grade stainless steel parts
- Polished internal surfaces
- Hygienic elastomer impeller leaves no taste or odor
- Standard and hard face mechanical seals
- Flushing arrangement for mechanical seals
- Elastomer materials certified to latest US 3A Standard and FDA, EN1935: 2004 for EPDM and nitrile compounds
- Pump design certified to latest US 3A Standard
- Variety of port and impeller material options
- Rugged heavy-duty construction
- Serviceable end covers, wear plates, impellers, mechanical seals, shafts bearings
- 3A variants with hygienic impeller compounds
- Port options - tri-clamp, IDF, ACME 3A, DIN 11851, SMS, RJT



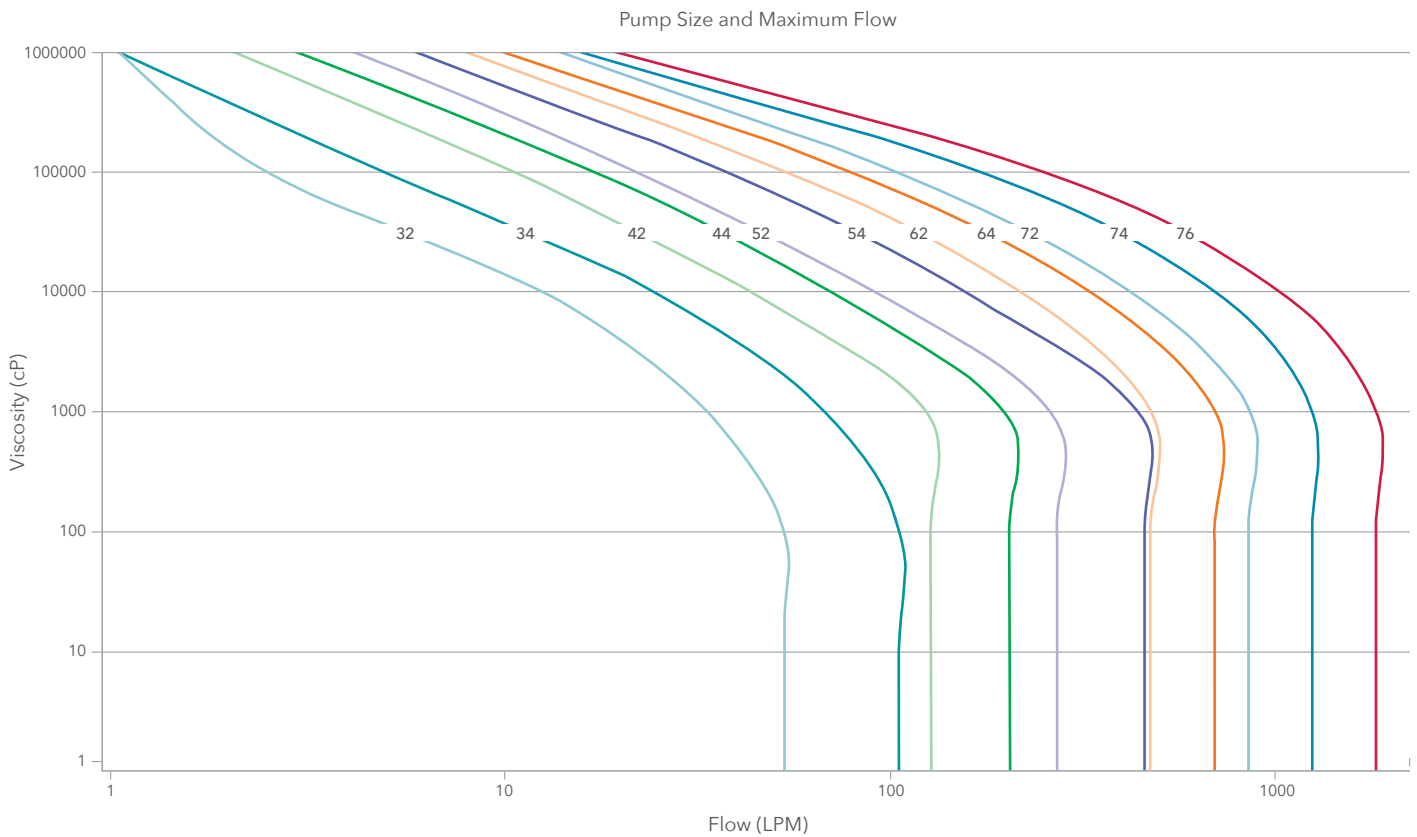
Solid Choices for Delicate Pumping



HP/UL Rotary Lobe Pumps

The 3A/FDA/EN1935-2004 approved design comes with C/SS, C/SiC SiC/SiC rotors, Nitrile, EPDM, Viton or PTFE elastomers and supports end cover relief valves and temperature control jackets.

The UL range mirrors the HP range. It comes with C/SiC as standard and employs a EHEDG-tested and approved design with Scimitar rotors. This hygienically-designed end cover and port joint gaskets, with EPDM to USP class VI, ensures maximum assurance when it is needed.



*This is an approximate selection guide only. Full details of flow, pressure, viscosity and suction conditions are required to enable exact selection to be made. Refer to manufacturer or appointed distributor

MODEL	PORT SIZE	DISPLACEMENT PER 100 REVS.	MAX FLOW	MAX PRESSURE	MAX SPEED	SIZE (LxWxH)	BARE SHAFT WEIGHT	TEMPERATURE	VISCOSITY
HP32	19mm or 25mm	3.5 Litres	52 LPM	15 bar	1500 RPM	213mm x 192mm x 166mm	8k	-30° to 140°C	1 to 1 million cP
HP34	25mm or 38mm	7 Litres	105 LPM	8 bar	1500 RPM	299mm x 192mm x 166mm	10kg		
HP/UL42	25mm or 38mm	12.3 Litres	123 LPM	15 bar	1000 RPM	274mm x 223mm x 196mm	18kg		
HP/UL44	38mm or 50mm	20.4 Litres	204 LPM	8 bar	1000 RPM	290mm x 223mm x 196mm)	20kg		
HP/UL52	38mm or 50mm	26.5 Litres	265 LPM	15 bar	1000 RPM	386mm x 249mm x 208mm	32kg		
HP/UL54	50mm or 76mm	45.5 Litres	455 LPM	8 bar	1000 RPM	414mm x 259mm x 213mm	35kg		
HP/UL62	50mm, 63mm or 76mm	64 Litres	461 LPM	15 bar	720 RPM	460mm x 270mm x 311mm	61kg		
HP/UL64	76mm or 100mm	95 Litres	684 LPM	8 bar	720 RPM	464mm x 302mm x 311mm	65kg		
HP/UL72	76mm or 100mm	123 Litres	836 LPM	15 bar	680 RPM	486mm x 380mm x 363mm	125kg		
HP/UL74	100mm or 152mm	205 Litres	1230 LPM	8 bar	600 RPM	526mm x 386mm x 363mm	145kg		
HP/UL76	127mm or 152mm	301.5 Litres	1809 LPM	5 bar	600 RPM	573mm x 412mm x 363mm	165kg		

Solid Choices for Delicate Pumping



28 Series Flexible Impeller Pumps

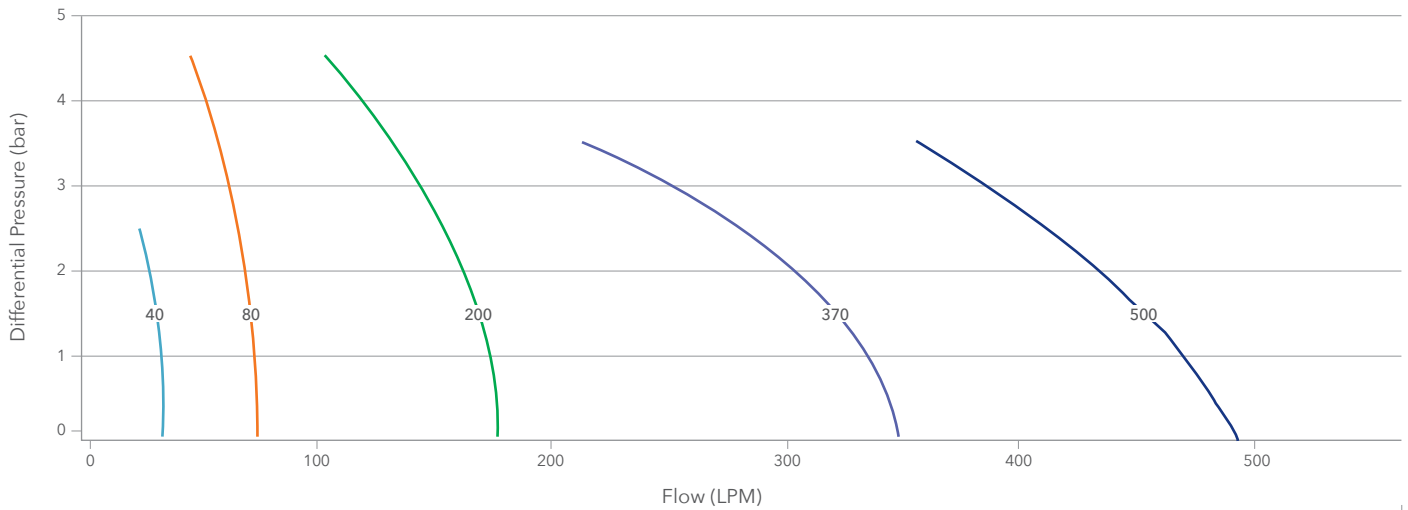
The simple design of the 28 series, along with a wide offering of options, ensures there is a variant for every application along with the assurance of long life.

MODEL	MOUNTING	IEC MOTOR FLANGE/FRAME SIZE	MAX SOLIDS SIZE	SIZE (LxWxH)	DIMENSIONS FOOT TO SHAFT	PEDESTAL DRIVE SHAFT OD/ CLOSE COUPLED STUBSHAFT ID	WEIGHT
28200	Pedestal	N/A	8mm	169mm x 112mm x 147mm	71.25mm	14mm	2.9kg
28220	Close couple	B3/B14/IEC80	8mm	116mm x 112mm x 112mm	N/A	19mm	2.5kg
28300	Pedestal	N/A	12mm	181mm x 121mm x 160mm	79.75mm	19mm	4.4kg
28320	Close couple	B3/B14/IEC80	12mm	135mm x 121mm x 121mm	N/A	19mm	3.5kg
28400	Pedestal	N/A	16mm	260mm x 157mm x 190mm	89.75mm	24mm	9.4kg
28420	Close couple	B3/B14/IEC90	16mm	165mm x 157mm x 157mm	N/A	24mm	6.7kg
28500	Pedestal	N/A	18mm	331mm x 186mm x 218mm	99.75mm	31mm	14.7kg
28520	Close couple	B3/B14/IEC100	18mm	192mm x 186mm x 186mm	N/A	28mm	10.2kg
28600	Pedestal	N/A	18mm	476mm x 198mm x 224mm	99.75mm	32mm	20kg
28620	Close couple	B3/B14/IEC132	18mm	282mm x 198mm x 198mm	N/A	Use special motor shaft	15kg

* Check hydraulics when handling viscous fluids.

This is an approximate selection guide only. Full details of flow, pressure, viscosity and suction conditions are required to enable exact selection.

Pump Size and Flow at 1450 RPM



PUMP SIZE	PORT SIZE	DRY PRIME MAX HEIGHT	MAX VISCOSITY	MAX SPEED (STD. PRESSURE/HIGH PRESSURE)	MAX PRESSURE IMPELLER (STD. PRESSURE/HIGH PRESSURE)	MAX PRESSURE PUMP	MAX ABSORBED POWER (STD. PRESSURE/HIGH PRESSURE)	STARTING TORQUE (STD. PRESSURE/HIGH PRESSURE)
40 LPM	25mm	5m	10000cP / 20 LPM	2500 RPM / 1450 RPM	2 bar / 3 bar	3 bar	0.32kW / 0.21kW	2.1 Nm / 4.1 Nm
40 LPM	25mm	5m		1450 RPM	2 bar / -	1.7 bar	0.25kW	2.1 Nm / -
80 LPM	25mm	5m	10000cP / 50 LPM	2500 RPM / 1450 RPM	2.8 bar / 4.4 bar	4.4 bar	0.94kW / 0.52kW	6.5 Nm / 10.7 Nm
80 LPM	25mm	5m		1450 RPM	2.6 bar / -	1.7 bar	0.42kW	6.5 Nm / -
200 LPM	38mm	5m	10000cP / 150 LPM	2500 RPM / 1450 RPM	2.9 bar / 4.5 bar	4.5 bar	1.6kW / 1.1kW	13 Nm / 35 Nm
200 LPM	38mm	5m		1450 RPM	2.7 bar / -	1.4 bar	1kW	13 Nm / -
370 LPM	50mm	4.5m	20000cP / 300 LPM	1500 RPM	2.55 bar / 3.1 bar	3.1 bar	1.7kW / 2.4kW	33.2 Nm / 37.3 Nm
370 LPM	50mm	5m		1450 RPM	1.25 bar / 2.55 bar	1 bar	1.7kW / 1.7kW	18.3 Nm / 33.2 Nm
500 LPM	65mm	5m	20000cP / 400 LPM	1500 RPM	2 bar / 3.8 bar	3.8 bar	2.5kW / 5.6kW	29.2 Nm / 31.9 Nm
500 LPM	65mm	5m		1500 RPM	2 bar / 3.8 bar	3 bar	2.5kW / 5.6kW	29.2 Nm / 31.9 Nm



VAN DER ENDE GROEP

Jabsco

Scheldestraat 4
5347 JD Oss
The Netherlands

Telephone +31 (0)412 63 13 78
E-mail jabsco@vanderendegroep.nl
Website www.vanderendegroep.nl

Headoffice

Aartsdijkweg 23
2676 LE Maasdijk
The Netherlands

+31 (0)174 51 50 50
jabsco@vanderendegroep.nl
www.vanderendegroep.nl