

# D75 BODY UNIT PARTS LIST

Part No.	Description
7596092000	D75 Body Unit 2000 RPM. Delivery flange rotated 90°.
7596092100	D75 Body Unit 2000 RPM. Delivery flange



Manual Part no. 890000931PTL

**SELWOOD**

[www.selwood.co.uk](http://www.selwood.co.uk)

# CONTENTS

1	Contact Details .....	3
2	Ordering Spares .....	3
3	Amendment record .....	3
4	Related Documentation .....	4
5	Manual Parameters .....	4
6	Spares Kit.....	4
7	Body Unit Labels .....	5
8	Volute and Separator.....	6
9	Impeller Assembly and Delivery Valve.....	7
10	Bearing Housing.....	8
11	Air Pump .....	9



## 4 Related Documentation

- Data Sheet - <https://www.selwood.co.uk/pump-sales/solids-handling-pumps>

## 5 Manual Parameters

This publication must be kept in a safe location or with the Pump Machinery, most recent publications of this document can be found on the Selwood website, refer to the amendment record to understand changes upon issue update.

### Purpose

This publication provides a parts list for items captive to Selwood build: D75 Body Unit variants only.

### Scope

The intention of this manual is to provide an inclusive parts list. Although this manual can be useful when assembling, some components may be structured for easier recognition and may not be tweaked in the exact order of assembly.

## 6 Spares Kit

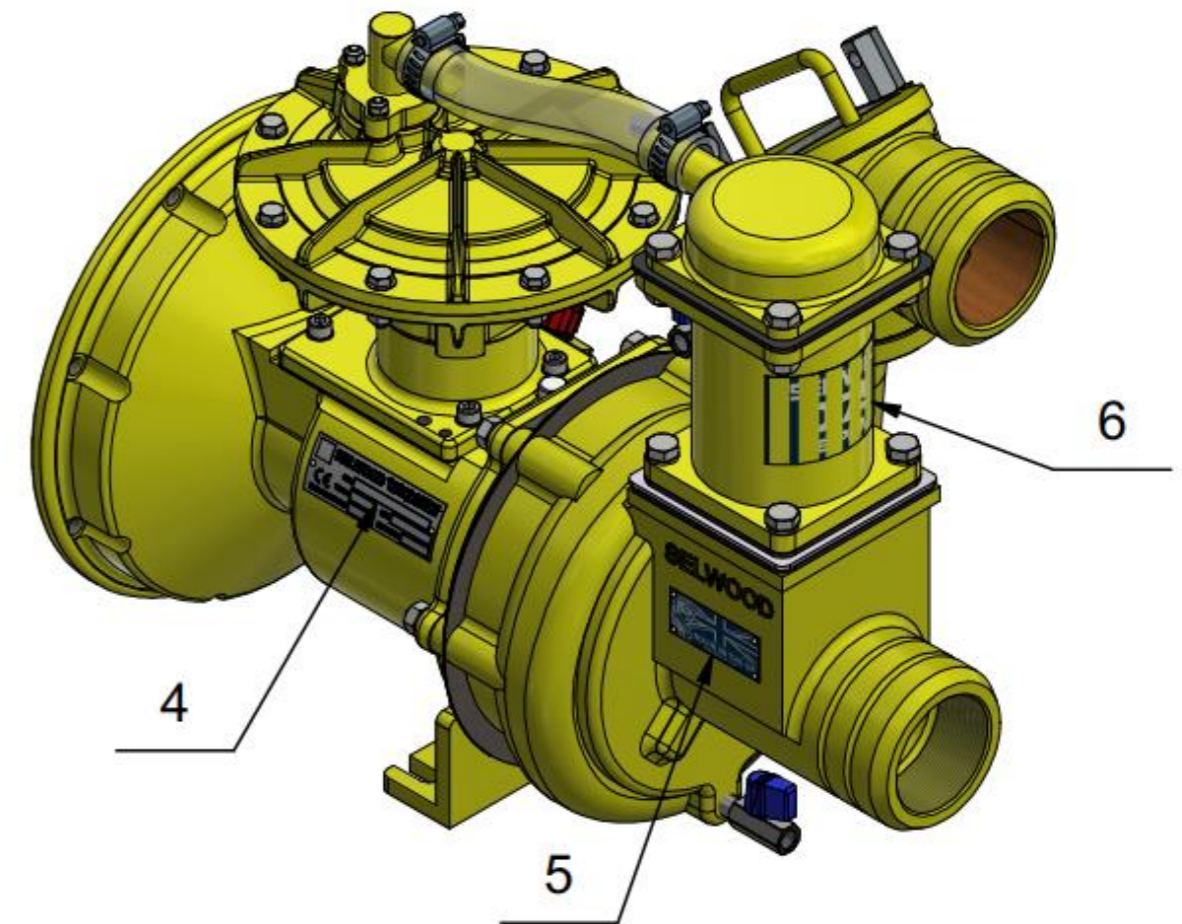
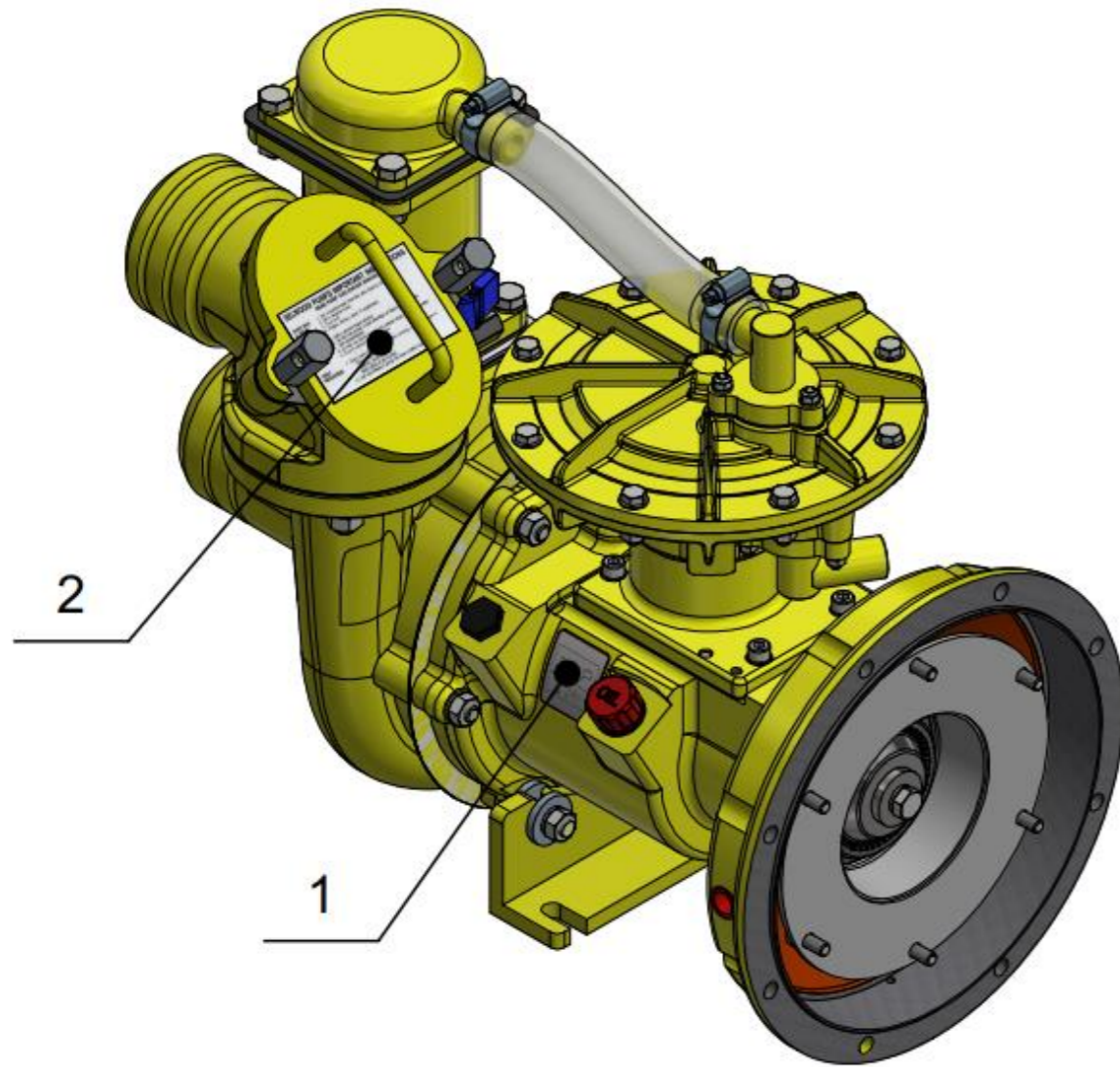
Part No.	Description
7507023000	D75 recommended spares kit (1 year)
7507024000	D75 recommended Spares Kit (2 year)
7500140000	D75 Air pump seal kit
7500206000	D75 Mechanical seal kit
7507021000	D75 Separator Kit
7507022000	D75 Delivery Valve kit

## 7 Body Unit Labels

Note:

- Item 4 (ID Plate) secured in position with 2 off Round Head Hammer Drive screws (9045002259).

ITEM	PART No.	DESCRIPTION	QTY
1	0015229000	Check Oil label	1
2	0008072000	Instruction label – English	1
3	84000-D75	Selwood label	1
4	83000-0002	ID Plate	1
5	88000-0005	Made in the UK label	1

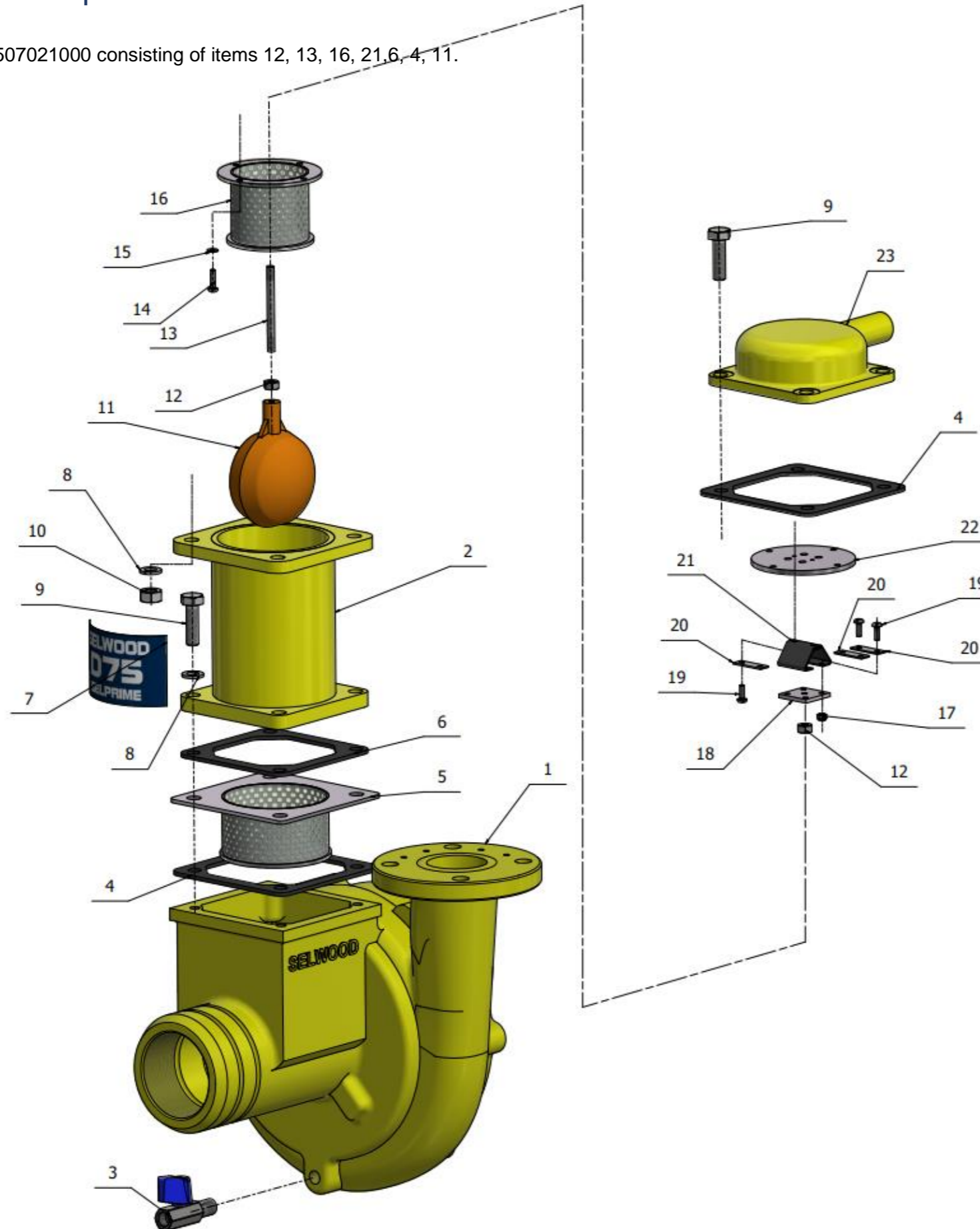




## 8 Volute and Separator

### Notes

1. Separator Kit 7507021000 consisting of items 12, 13, 16, 21, 6, 4, 11.



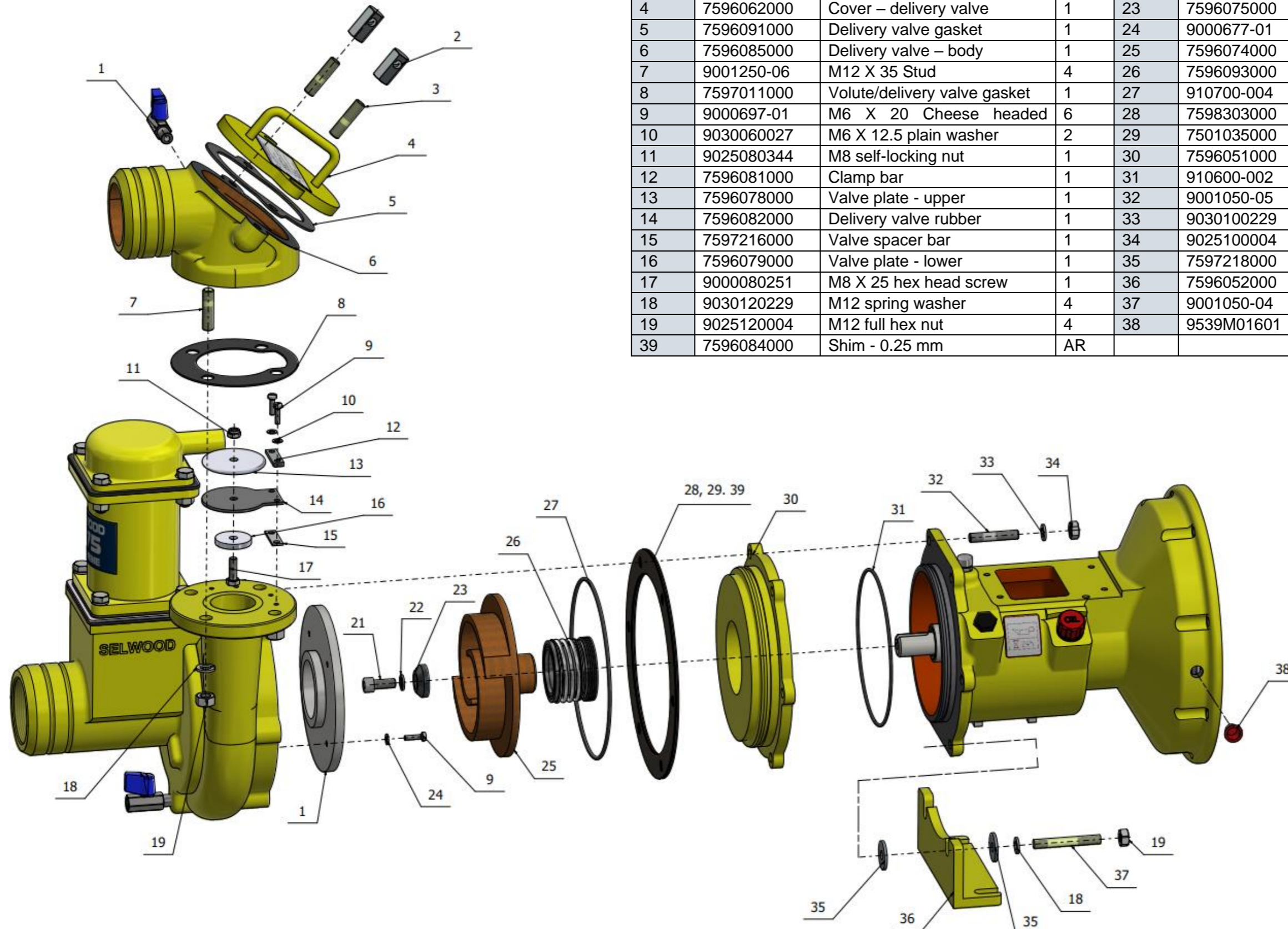
ITEM	PART No.	DESCRIPTION	QTY
1	7596063000	Volute (machined)	1
2	7596090000	Separator	1
3	0003350000	Drain tap	1
4	7596072000	Separator body gasket	2
5	7596064000	Lower diffuser	1
6	7596073000	Separator cap gasket	1
7	84000-D75	Body Unit – D75 label	1
8	9030100229	M10 spring washer	8
9	9000100351	M10 X 35 Hex head screw	8
10	9025100004	M10 Full hex nut	4
11	9565K02403	Float – 3 X 1/4" BSW	1
12	0006741030	1/4" BSW nut	2
13	7521211000	Operating rod	1
14	9018040167	M4 X 16 pan head screw	4
15	9030040027	M4 plain washer	4
16	7596065000	Upper diffuser	1
17	9025040307	M4 self-locking nut	4
18	7596069000	Operating plate	1
19	9018040207	M4 X 20 pan head screw	6
20	7596070000	Clamp bar	3
21	7596071000	Peel valve	1
22	7596067000	Peel valve port plate	1
23	7596053000	Top cap – separator	1
24	83000-0002	Information label	1

## 9 Impeller Assembly and Delivery Valve

### Notes:

1. D75 Mechanical seal kit no. 7500206000.
2. D75 Delivery valve kit 7507022000.

ITEM	PART No.	DESCRIPTION	QTY	ITEM	PART No.	DESCRIPTION	QTY
1	0003350000	Drain tap	1	20	7596055000	Wear plate	1
2	1589135000	Hex long nut	2	21	9001047-01	M10 X 25 hex socket cap screw	1
3	9001250-09	Stud M12 X 30	2	22	9001077-01	Self-centralising seal washer	1
4	7596062000	Cover – delivery valve	1	23	7596075000	Impeller washer	1
5	7596091000	Delivery valve gasket	1	24	9000677-01	M6 spring washer	4
6	7596085000	Delivery valve – body	1	25	7596074000	Impeller	1
7	9001250-06	M12 X 35 Stud	4	26	7596093000	Mechanical seal assembly	1
8	7597011000	Volute/delivery valve gasket	1	27	910700-004	O ring - 195 mm (inner diameter)	1
9	9000697-01	M6 X 20 Cheese headed	6	28	7598303000	Shim - 0.5 mm thick	AR
10	9030060027	M6 X 12.5 plain washer	2	29	7501035000	Shim – 1.0 mm thick (polymex)	AR
11	9025080344	M8 self-locking nut	1	30	7596051000	Mechanical seal housing	1
12	7596081000	Clamp bar	1	31	910600-002	O ring – 169.5 mm (inner	1
13	7596078000	Valve plate - upper	1	32	9001050-05	M10 X 40 stud	6
14	7596082000	Delivery valve rubber	1	33	9030100229	M10 Spring Washer (rect)	8
15	7597216000	Valve spacer bar	1	34	9025100004	M10 nut (full hex)	8
16	7596079000	Valve plate - lower	1	35	7597218000	Spacer (bearing housing foot)	4
17	9000080251	M8 X 25 hex head screw	1	36	7596052000	Bearing housing foot	1
18	9030120229	M12 spring washer	4	37	9001050-04	M10 X 60 Stud	2
19	9025120004	M12 full hex nut	4	38	9539M01601	Threaded protection plug	1
39	7596084000	Shim - 0.25 mm	AR				

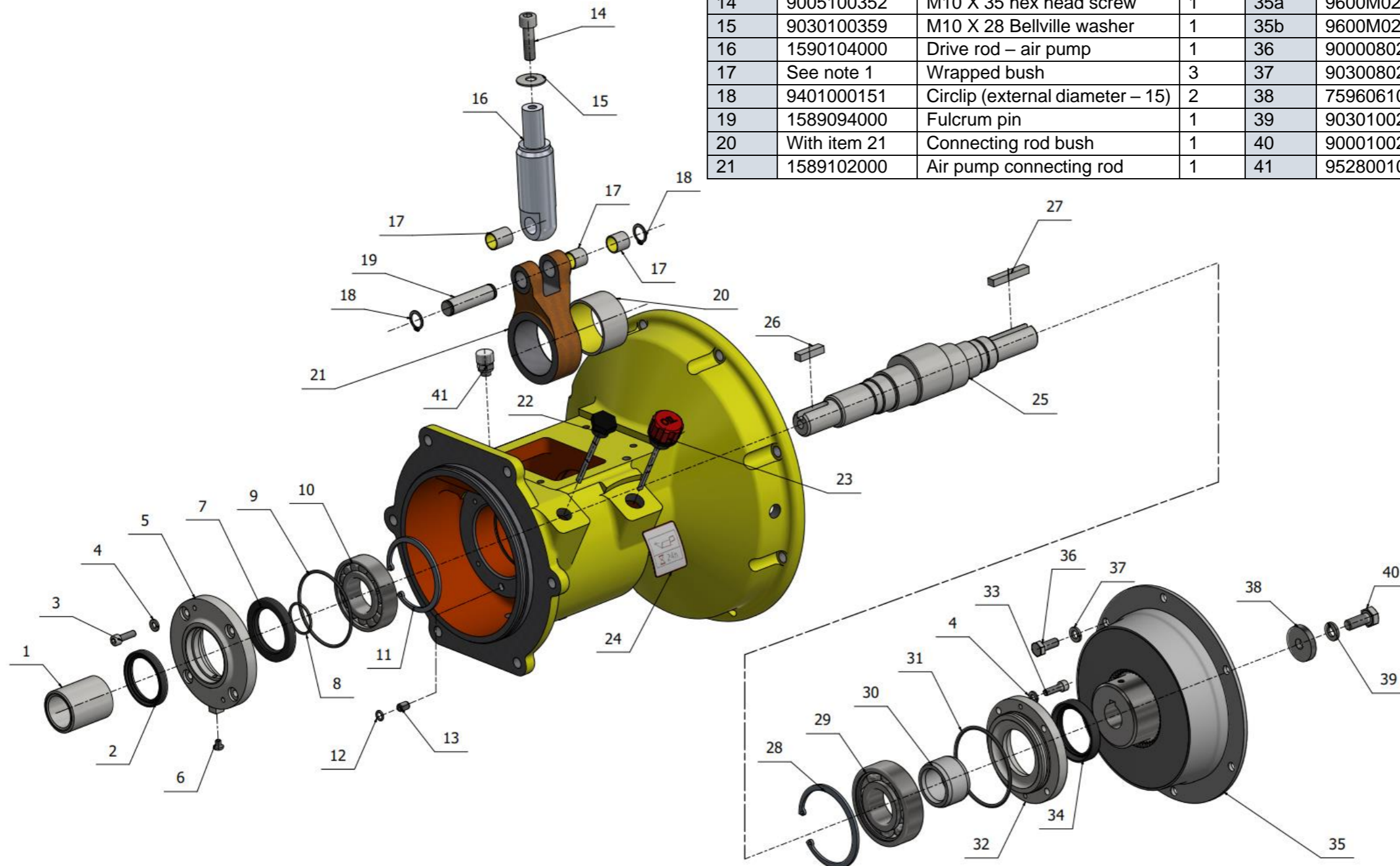




## 10 Bearing Housing

1. Bushes are supplied with connecting rod assembly (item 21) or drive rod assembly (item 16).

ITEM	PART No.	DESCRIPTION	QTY	ITEM	PART No.	DESCRIPTION	QTY
1	7596059000	Shaft sleeve (impeller end)	1	22	9524P00302	Oil filler plug with dipstick	1
2	910110-003	Oil seal (outer diameter – 70)	1	23	7598305000	Breather plug with dipstick	1
3	9005060200	M6 X 20 hex socket cap screw	4	24	0015229000	Label – oil check	1
4	9030060229	M6 spring washer (rect)	8	25	7596060000	Drive shaft	1
5	7596057000	Bearing retainer	1	26	9000099-05	Shaft key (8X7X30)	1
6	9000594-01	M6 Cheesehead screw	1	27	9000099-04	Shaft key (8X7X45)	1
7	910110-004	Oil seal (outer diameter 62)	1	28	94D130080A	Circlip (internal diameter – 80)	1
8	910100-002	O ring (inner diameter 28 mm)	1	29	930100-001	Deep groove ball bearing	1
9	910200-003	O ring (inner diameter 72 mm)	1	30	7596058000	Shaft sleeve (coupling end)	1
10	930110-003	Roller bearing	1	31	910800-005	O ring (inner diameter – 75 mm)	1
11	94D130072A	Circlip (Bore diameter – 72)	1	32	7596056000	Bearing retainer	1
12	910000-001	O ring (inner diameter – 7.5)	1	33	9005060200	M6 X 20 cap head screw	1
13	7598256000	Hollow dowel pin	1	34	910110-002	Oil seal (inner diameter – 45 mm)	1
14	9005100352	M10 X 35 hex head screw	1	35a	9600M02502	Bowlplex elastic coupling	-
15	9030100359	M10 X 28 Bellville washer	1	35b	9600M02301	Centa coupling – Lombardini	-
16	1590104000	Drive rod – air pump	1	36	9000080201	M8 X 20 hex head set screw	6
17	See note 1	Wrapped bush	3	37	9030080229	M8 spring washer (rect)	6
18	9401000151	Circlip (external diameter – 15)	2	38	7596061000	Thrust washer	1
19	1589094000	Fulcrum pin	1	39	9030100229	M10 spring washer (rect)	1
20	With item 21	Connecting rod bush	1	40	9000100251	M10 X 25 hex head screw	1
21	1589102000	Air pump connecting rod	1	41	9528001000	1/8" BSP breather plug	1

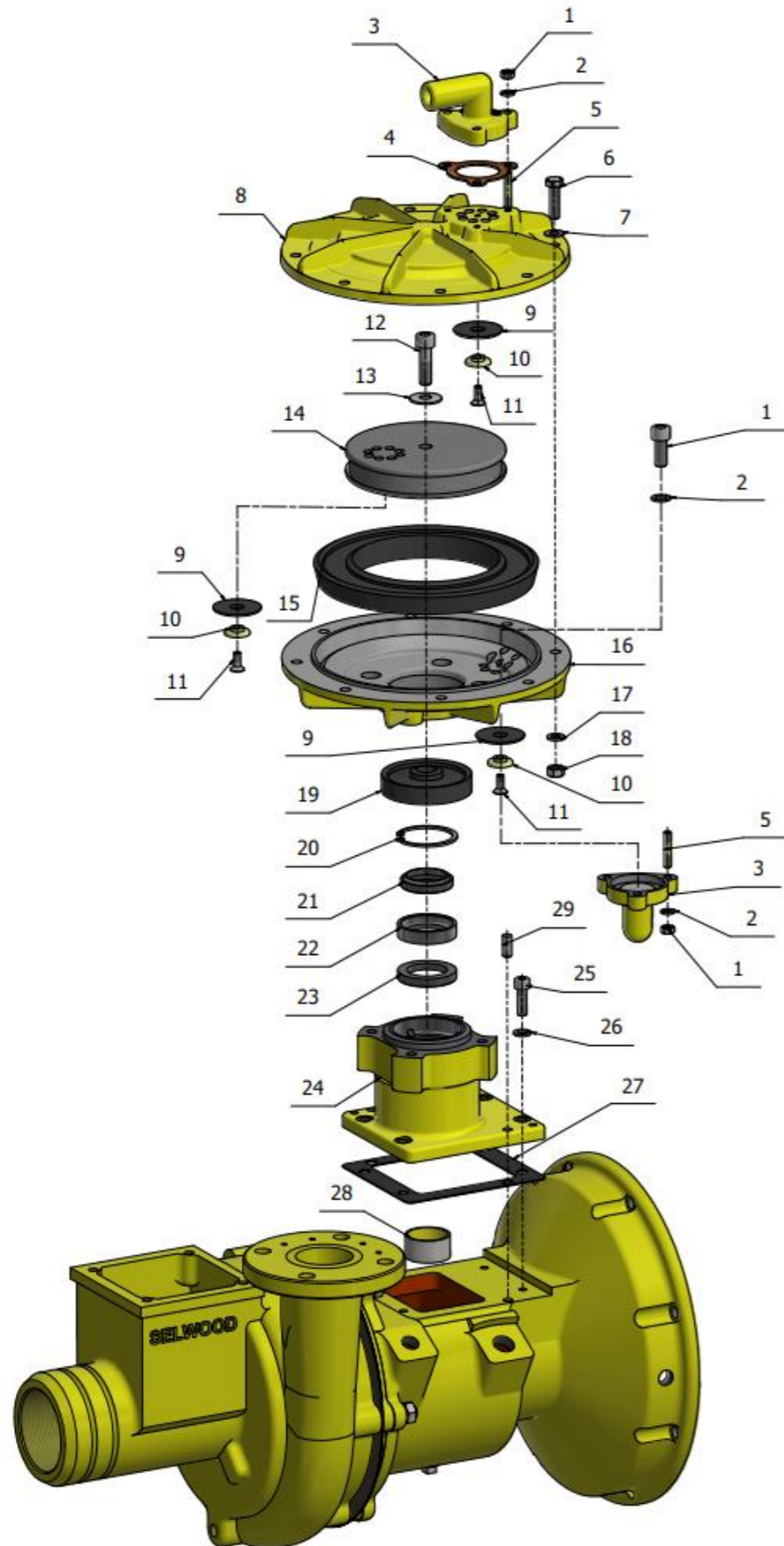




# 11 Air Pump

## Notes

1. For a visual aid of components captive to the air pump pedestal (item 24), reference Figure 1.
2. Air pump seals kit comprising of items, 9, 15, 19, 13 and separator peel valve.



ITEM	PART No.	DESCRIPTION	QTY
1	9025060004	M6 full hex nut	6
2	9030060229	M6 spring washer	6
3	0891081000	Exhaust hose adaptor	2
4	0008022000	Gasket	1
5	9036060204	M6 X 23 Stud	6
6	9000080301	M8 X 30 hex head screw	8
7	9030080024	M8 X 17 plain washer	8
8	0008015100	Outer air pump body	1
9	0008021100	Air pump valve	3
10	0008209000	Air pump valve clamp	3
11	9009060160	M6 X 6 Countersink screw	3
12	9005100352	M10 X 35 cap head screw	1
13	9030100359	M10 X 28 Bellville washer	1
14	0008016100	Piston head	1
15	0008023000	Actuator seal	1
16	0008014100	Inner air pump	1
17	9030080229	M8 spring washer (rect)	12
18	9025080004	M8 full hex nut	8
19	0008024000	Neck seal	1
20	94D130050A	Circlip (internal diameter – 50 mm)	1
21	9140035070	Wiper seal	1
22	1589100000	Seal carrier	1
23	9171044100	Internal distance seal	1
24	7598257000	Air pump pedestal	1
25	9005080250	M8 X 25 cap head screw	4
27	1589101000	Bearing housing gasket	1
28	930144-001	Bronze bush bearing	1
29	9000869-01	8 X 20 Dowel pin	1

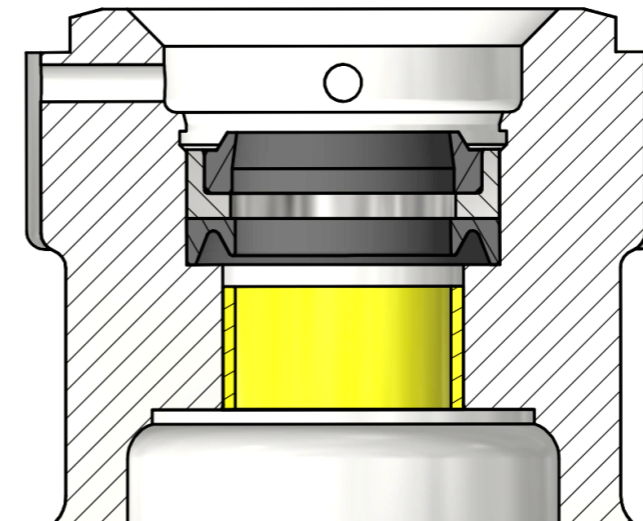


Figure 1: Visual aid of components captive to the air pump pedestal.